

# WILDERNESS HILLS



## Wilderness Hills 7th Addition

South 27th St. and Whispering Wind Blvd.  
(1/2 mile south of Yankee Hill Rd. east of South 27th St.)



### Covenant Requirements

#### Minimum Finished Floor Area:

Ranch	1,650 S.F.
1 1/2 Story	1,850 S.F.
2 Story	2,150 S.F.

Plan, elevation, and site approval required.  
See restrictive covenants specific to this addition for other restrictions including exterior finish, roofing requirements, and setbacks.

Association Dues: \$100 per fiscal year

### LEGEND

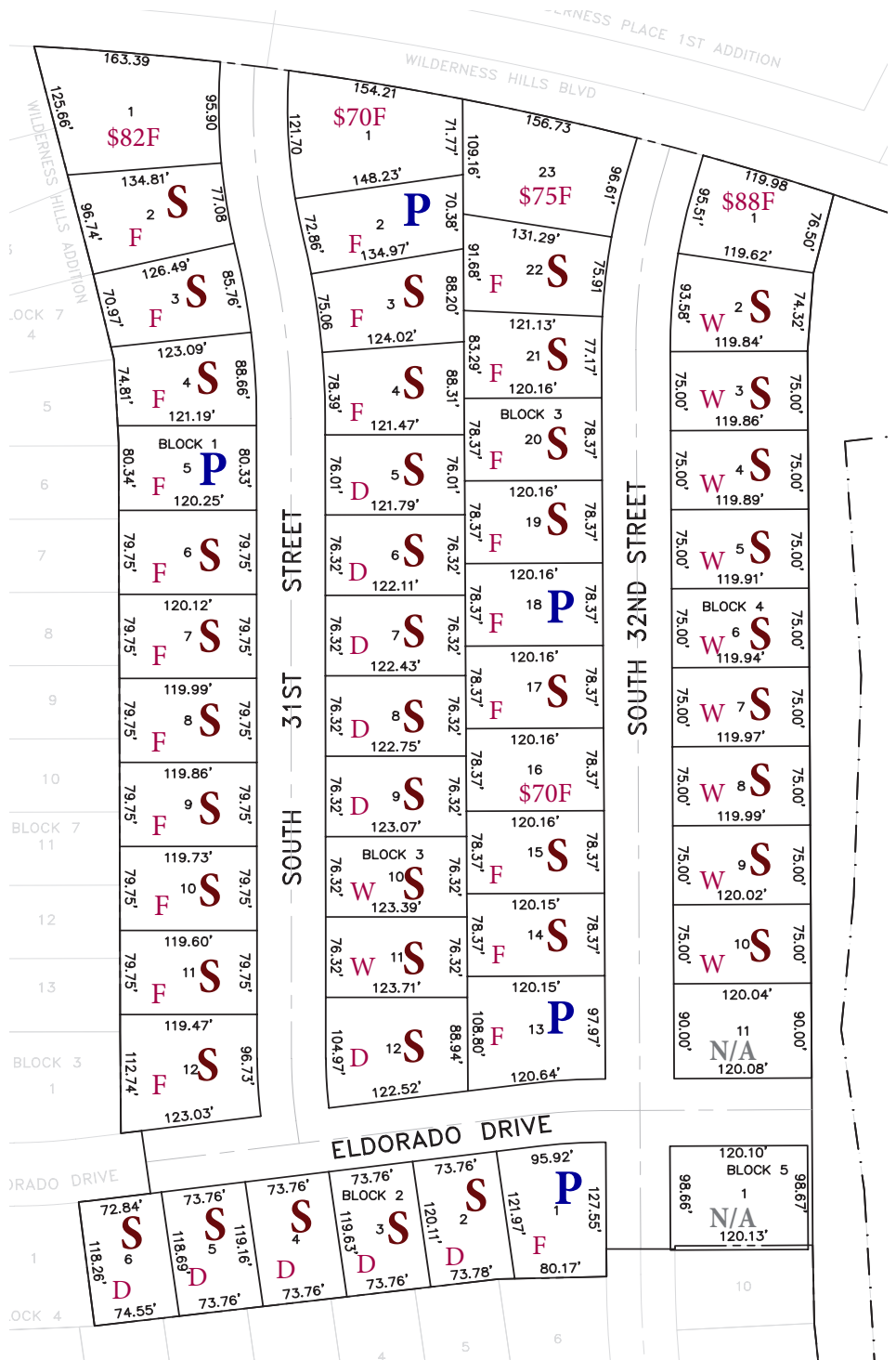
#### Status

- S - Sold
- P - Pending Contract
- N/A - Delayed Availability

#### Elevation

- W - Walkout
- D - Daylight
- F - Flat

January 1, 2017



Shelly Simonson  
1101 "N" St.  
Lincoln, NE 68508  
www.lincolnfed.com  
(402) 474-1400

**Lincoln  
Federal**  
BANCORP, INC.