

# WILDERNESS HILLS



## Wilderness Hills 5th Addition

South 27th St. and Whispering Wind Blvd.  
(1/2 mile south of Yankee Hill Rd. east of South 27th St.)

### Covenant Requirements

**Minimum Finished Floor Area:**

Ranch	1,650 S.F.
1 1/2 Story	1,850 S.F.
2 Story	2,150 S.F.

Plan, elevation, and site approval required. See restrictive covenants specific to this addition for other restrictions including exterior finish, roofing requirements, and setbacks.

Association Dues: \$100 per fiscal year

### LEGEND

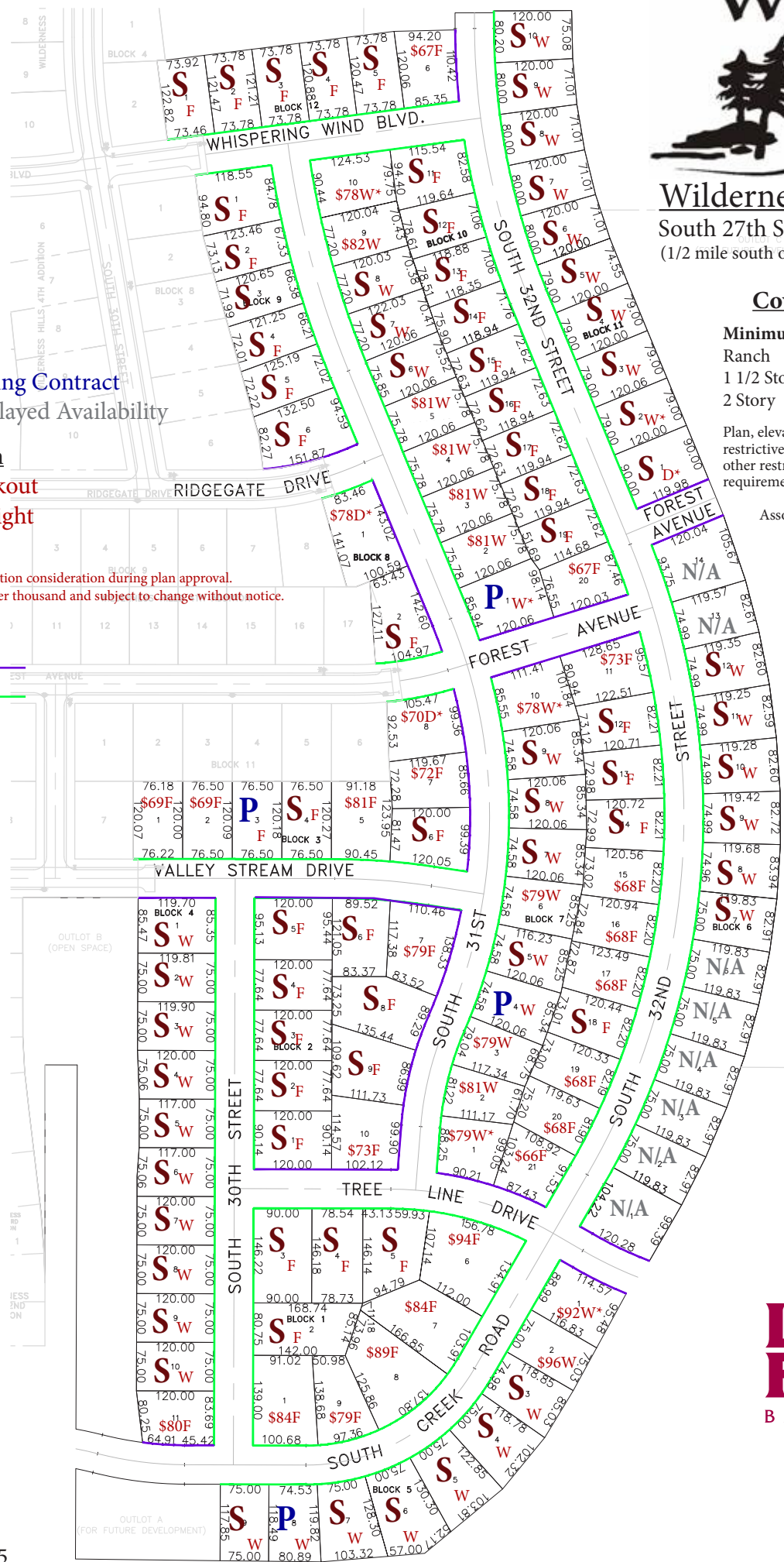
- Status**  
**S** - Sold  
**P** - Pending Contract  
**N/A** - Delayed Availability

- Elevation**  
**W** - Walkout  
**D** - Daylight  
**F** - Flat

\*Irregular elevation consideration during plan approval.  
 Prices shown per thousand and subject to change without notice.

### Setbacks

- 20' (purple line)
- 25' (green line)



### Contact Information

Shelly Simonson  
 1101 "N" St.  
 Lincoln, NE 68508  
[www.lincolnfed.com](http://www.lincolnfed.com)  
 (402) 474-1400

