

# WILDERNESS HILLS



## Wilderness Hills 1st Addition

South 27th St. and Whispering Wind Blvd.  
(1/2 mile south of Yankee Hill Rd. on South 27th St.)

### Covenant Requirements

#### Setbacks:

25 ft. front (20 ft. cul-de-sac)  
7.5 ft. side yard (5 ft. cul-de-sac)  
20 - 25 ft. side street on corner lots  
Rear yard - adhere to abutting street

#### Minimum Finished Floor Area:

|             |            |
|-------------|------------|
| Ranch       | 1,650 S.F. |
| 1 1/2 Story | 1,850 S.F. |
| 2 Story     | 2,150 S.F. |

Plan, elevation, and site approval required. See restrictive covenants specific to this addition for other restrictions as well as exterior finish and roofing requirements.

Association Dues: \$100 per year

Developed by:



**Lincoln Federal**

BANCORP, INC.

### Contact Information

Shelly Simonson

1101 N Street

Lincoln NE

www.lincolnfed.com

402-474-1400

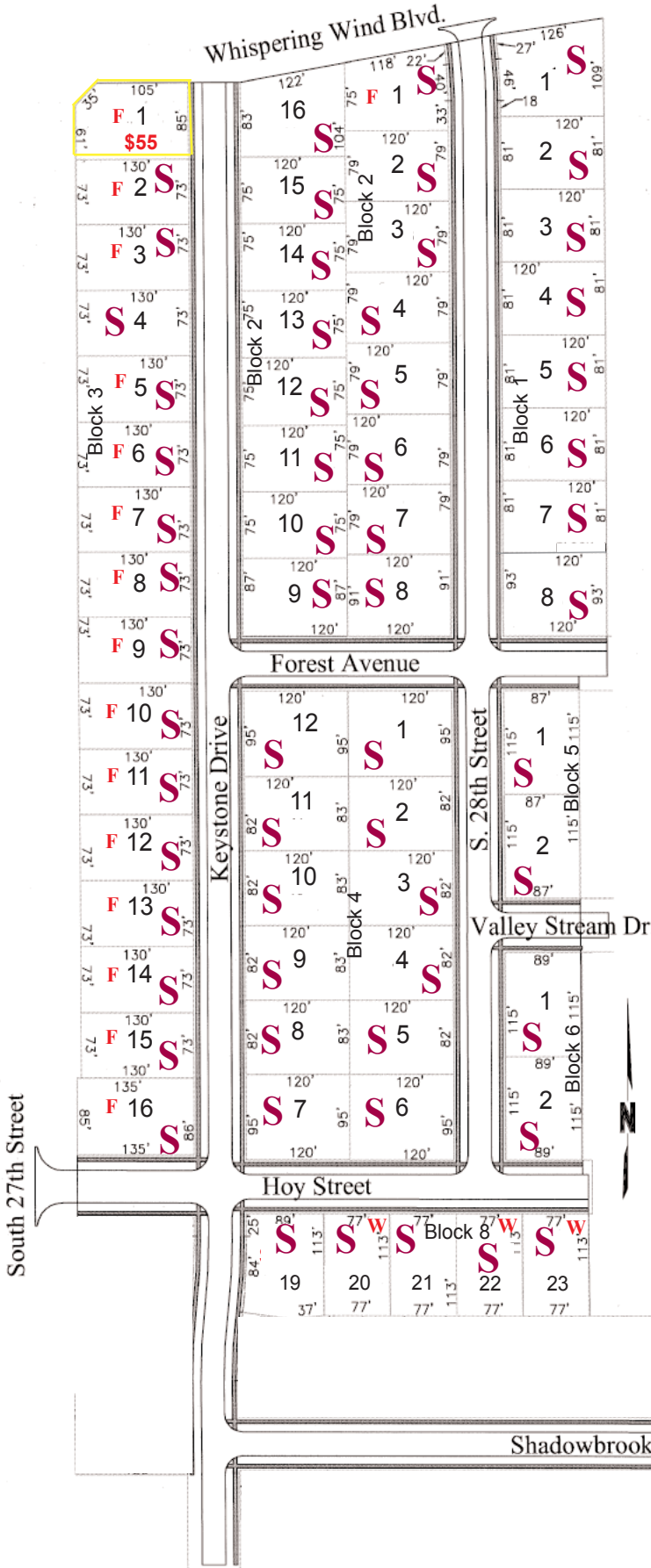
### LEGEND

**S - Sold**  
**P - Contract Pending**

**W - Walkout**  
**D - Daylight**  
**F - Flat**

**July 2015**

Prices shown per thousand & subject to change without notice.



**HOMEOWNERS: Lots available for direct purchase!**

